

SECTION No. 12

SCALE 20ft = 1 INCH
L. E. DABOLL CIVIL ENGR.
NEW LONDON CONN.

M Y S T I C
R I V E R

M Y R T L E A V E N U E

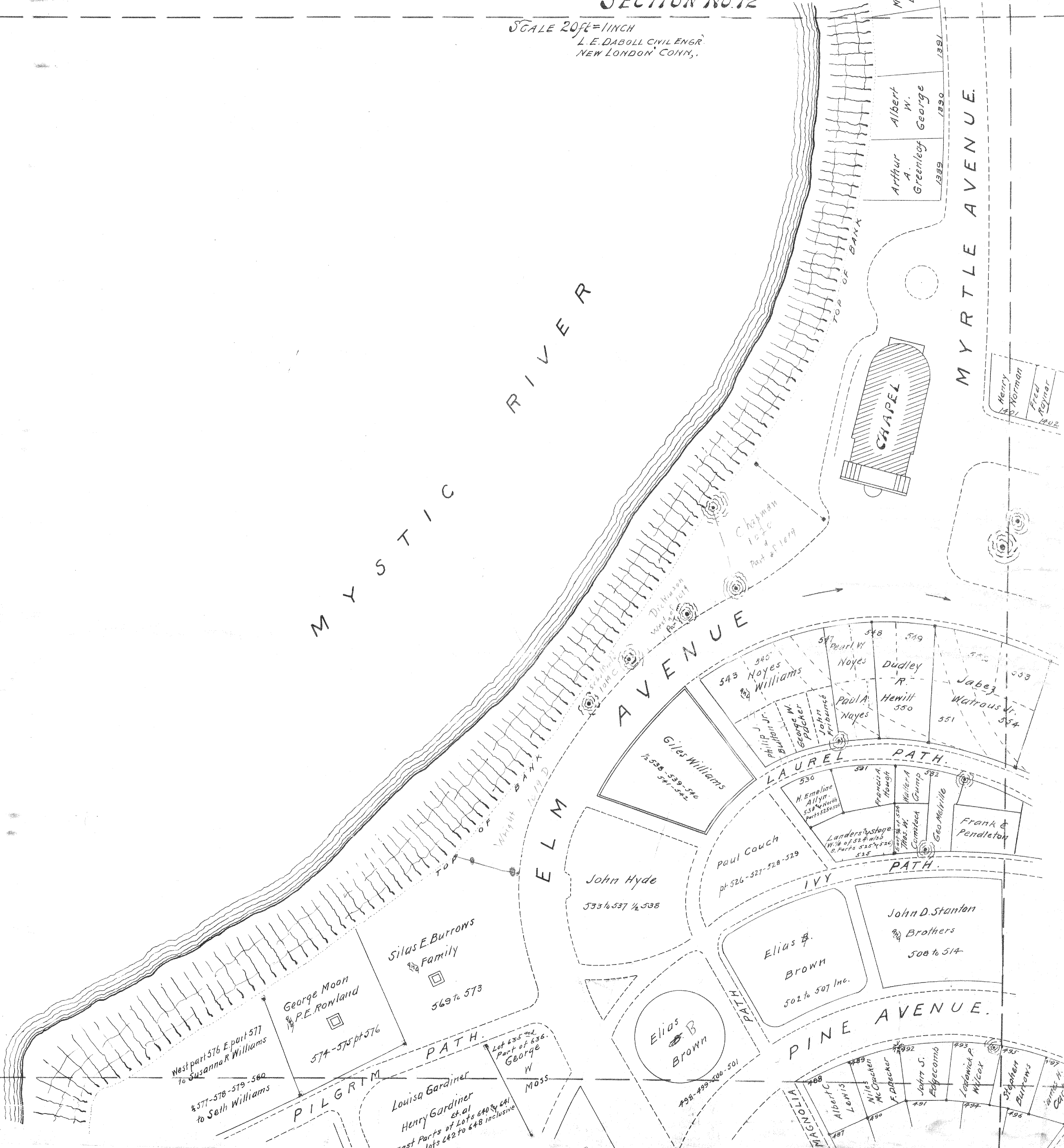
E L M
A V E N U E

L A U R E L P A T H

I V Y P A T H

P I N E A V E N U E

P I L G R I M
P A T H



Arthur A. Greenleaf 1889
Albert W. George 1890
Mary Reel Leonard 1892

Henry Norman 1801
Fred Royner 1802

Chapman 1840
Part of 1879

Philip J. Buffon Jr.
George W. Spucher
John Fribence

543 Noyes Williams
545 Noyes Williams
547 Pearl W. Noyes
548 Noyes
549 Dudley R. Noyes
550 Paula Hewitt
551 Jabez Watrous Jr.

530 M. Emeline Ailyn
531 Francis A. Mough
532 Walter A. Grumb
533 Landers Stone
534 Geo. Melville
535 Frank & Pendleton

533 1/2 537 1/2 538 John Hyde
532 1/2 507 Inc. Elias B. Brown

508 to 514 John D. Stanton Brothers

498-499-500-501 Elias B. Brown
497 Albert Lewis
498 Niles McChucker
499 F. Decker
500 John S. Folger
501 Lewis P. Wilcox
502 Stephen Burrows
503 James H. Carter

West part 576 E part 577 to Susanna R. Williams
577-578-579-580 to Seth Williams

George Moon & P.E. Rowland
574-575 pt 576

Silas E. Burrows Family
569 to 573

Louisa Gardiner et al
Henry Gardiner et al
East Parts of Lots 640 to 641 also lots 642 to 648 inclusive

Lot 635 and Part of 636. George W. Moss